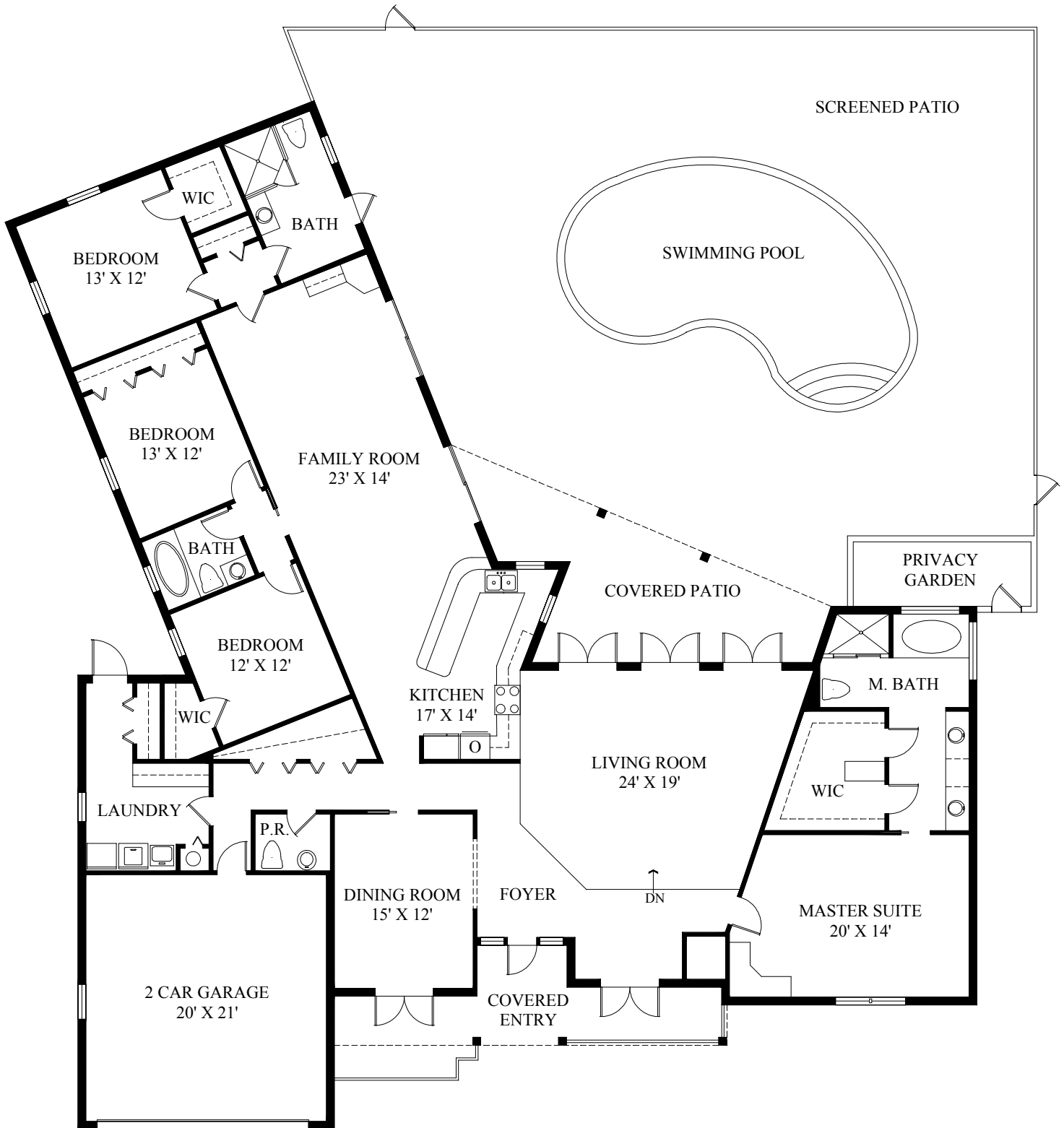


# 285 ALEXANDER PALM ROAD



[WWW.ROYALPALM.COM](http://WWW.ROYALPALM.COM)

Notice: This rendering is for marketing purposes only. All measurements, features and specifications are approximate. The accuracy of this information is subject to errors, omissions and changes. An architect should be contacted for actual measurements, features and specifications.